

FILE HOSTING SERVICE PROVIDERS

Table of Contents

INSTALLATION INSTRUCTIONS

Dropbox Installation Instructions.....	1
Google Drive Installation Instructions	4
OneDrive Installation Instructions	7

PRICING – PLEASE CLICK ON LINK BELOW TO VIEW PRODUCT PRICING PAGE ON WEBSITE.

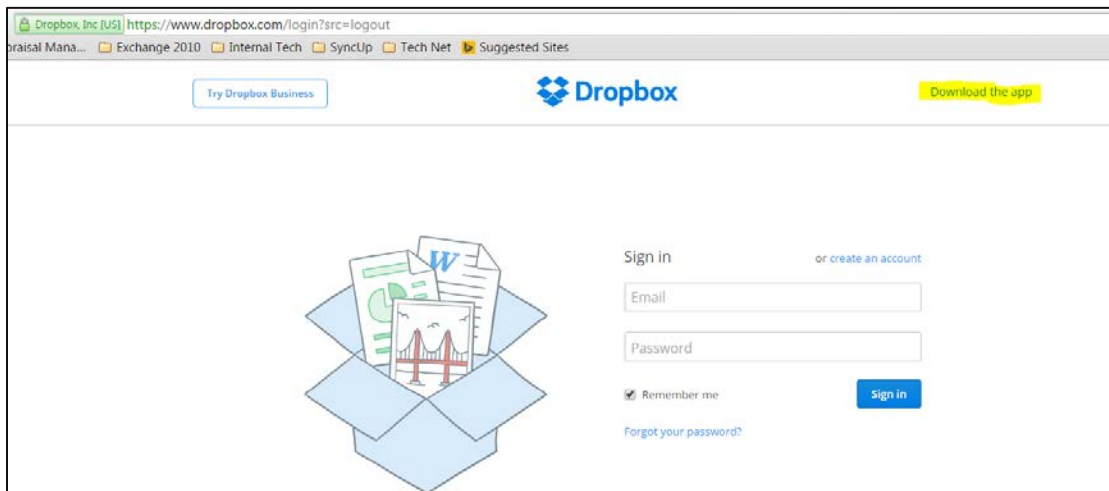
[Dropbox Pricing](#)

[Google Drive Pricing](#)

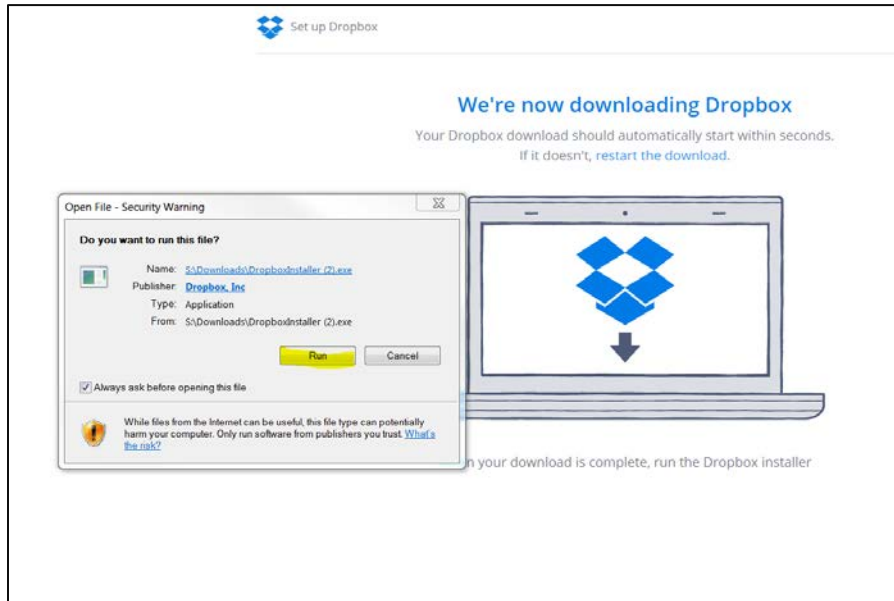
[OneDrive Pricing](#)

Dropbox Installation Instructions

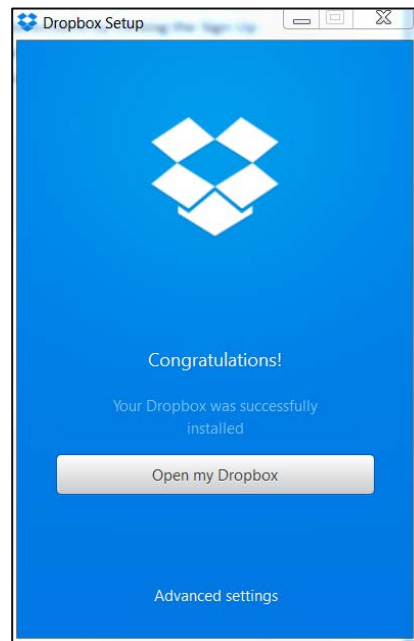
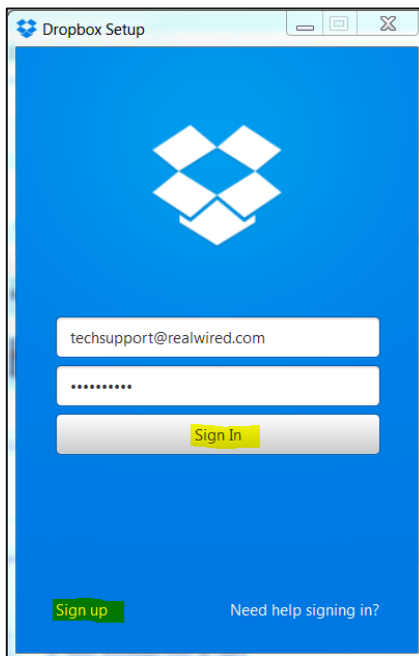
1. Go to <https://dropbox.com> and download the app:



2. Run the exe file to install Dropbox:



3. A Dropbox Setup window will open and prompt you for your email address and password associated with your Dropbox account. You can also create an account from this window by clicking the Sign Up button on the bottom right hand side of the window. If you do not already have a Dropbox account, please visit this link for specific [Dropbox pricing](#) information.

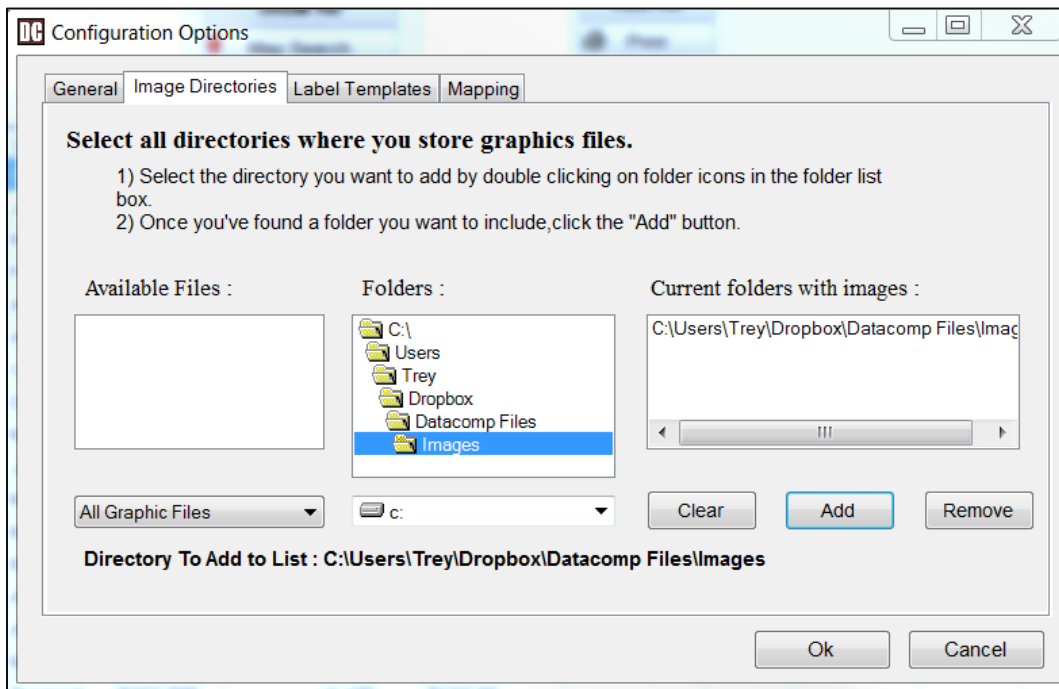


4. After successful installation, you will see the Dropbox Icon to the right of your task bar at the bottom of your screen:



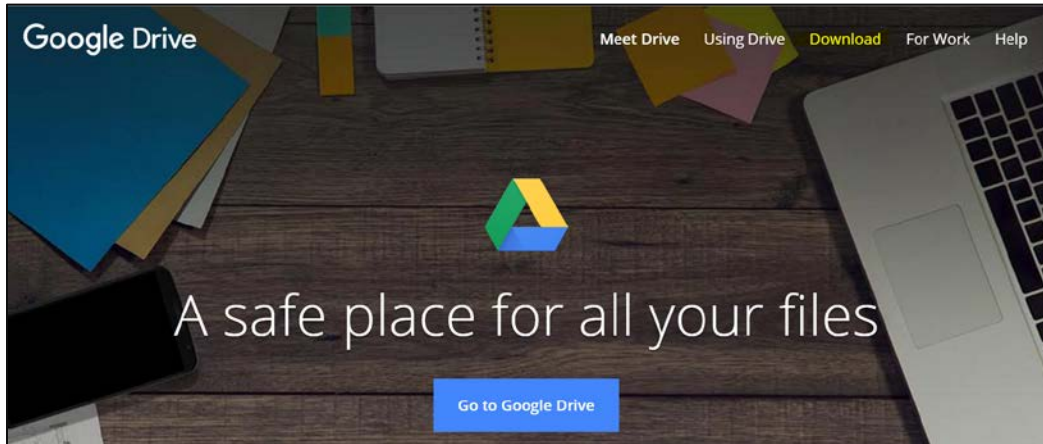
5. The default local location of your Dropbox folder will be...
C:\users\%your username%\dropbox

This is the directory that you will map your programs to for DataComp and/or Edge:

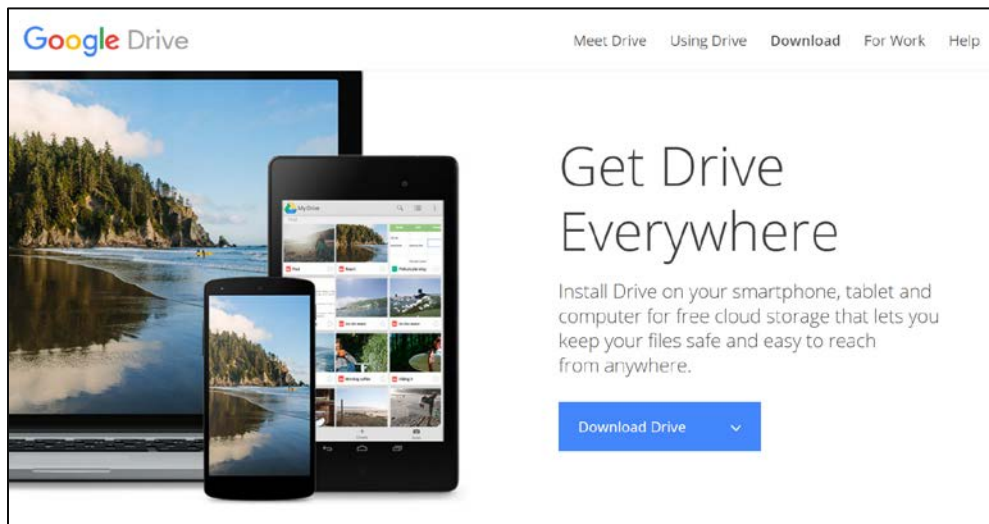


Google Drive Installation Instructions

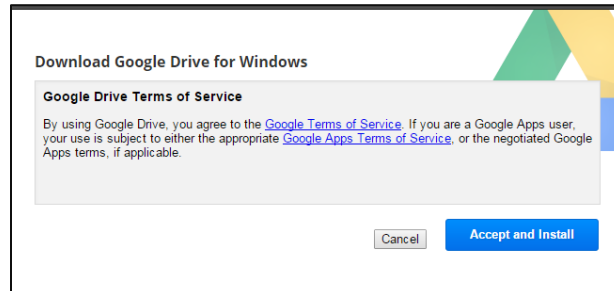
1. Go to <https://google.com/drive/> and click the “download” button:



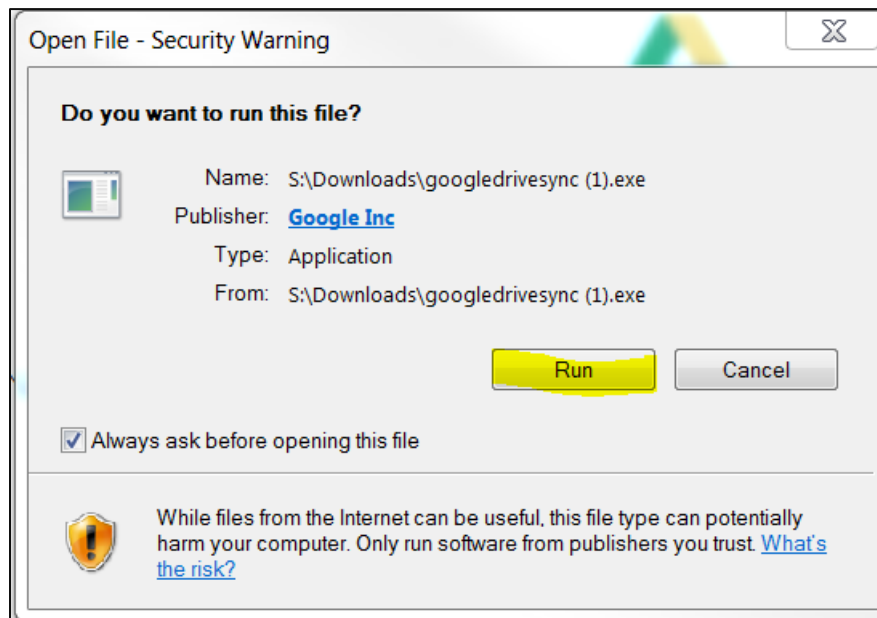
And then the “Download Drive” button on the next screen:



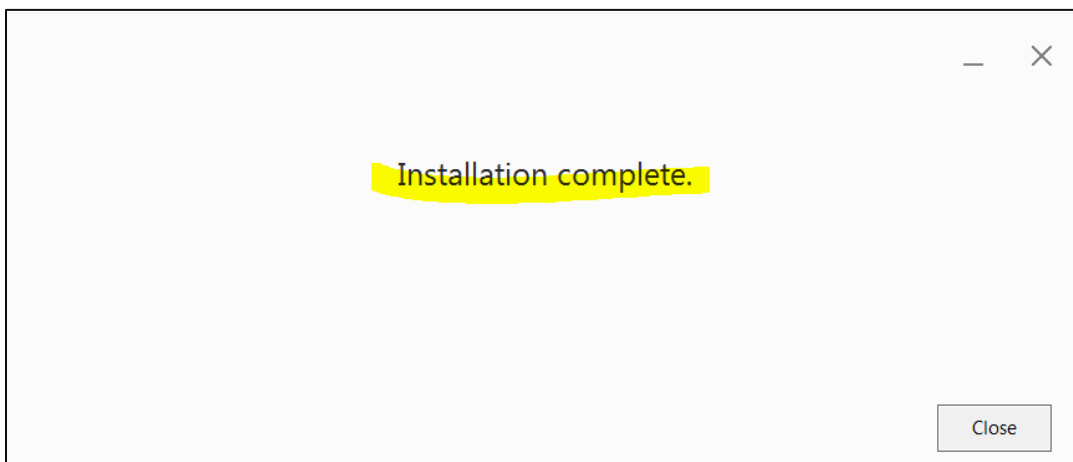
Agree to the terms of service and click “Accept and Install” when prompted:



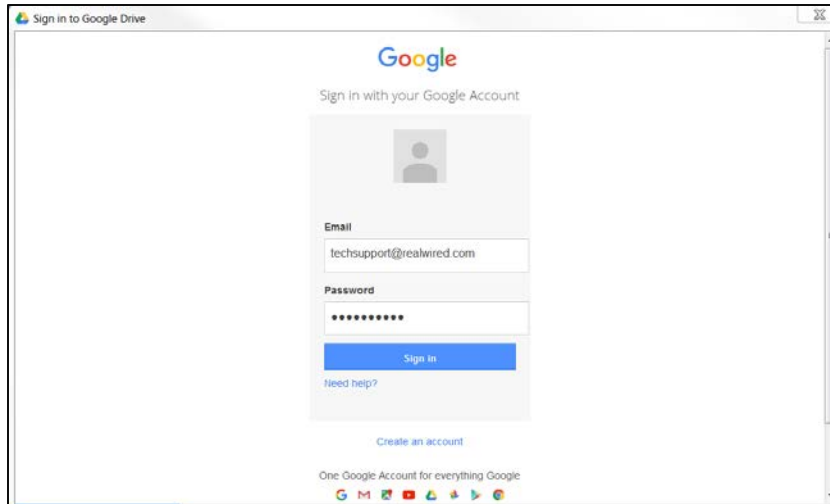
2. Run the exe file to install Google Drive.



Upon successful installation, you should receive the “Installation Complete” message.



3. You will be prompted to sign in to your Google account, or you can create an account if you do not already have one. If you do not already have a Google account, please visit this link for specific [Google Drive pricing](#) information.



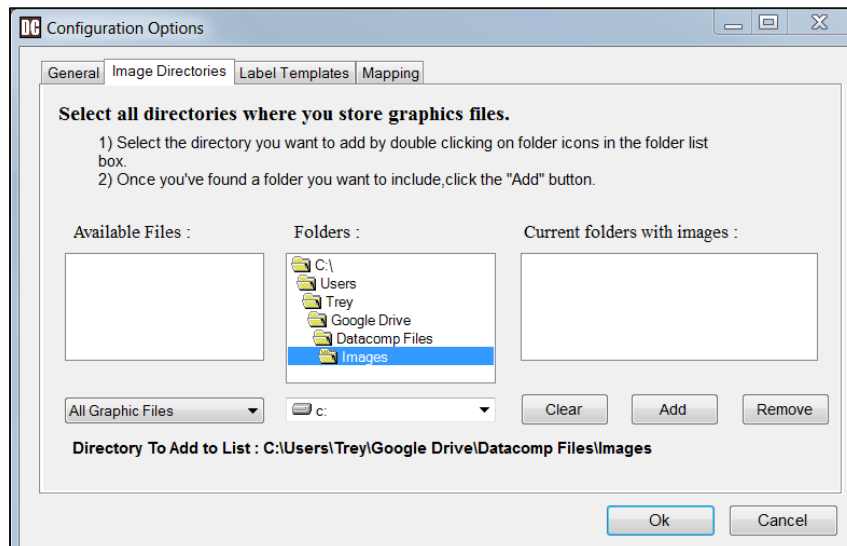
4. Once you sign in, you will see the Google Drive symbol on the bottom right hand side of your screen, next to your taskbar.



5. The default local location of your Google Drive folder is...

C:\users\% your username%\Google Drive

This is the directory that you will point your programs to for your supporting files:



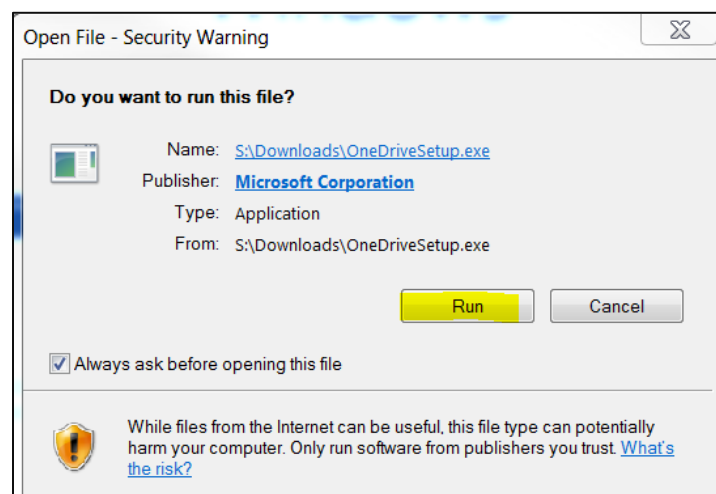
OneDrive Installation Instructions

**NOTE: OneDrive comes preinstalled on Windows 8.1 and Windows 10.
OneDrive is Not supported on Windows XP.**

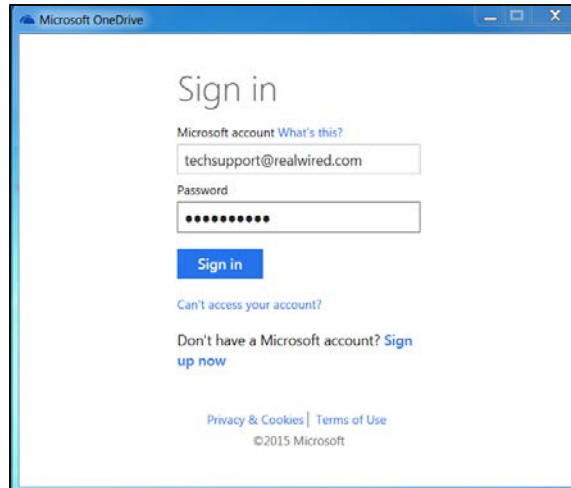
1. If you do not already have OneDrive preinstalled on your PC, you can install it from their website by browsing to <https://onedrive.live.com/about/en-us/download/>
2. Click the “Download” button:



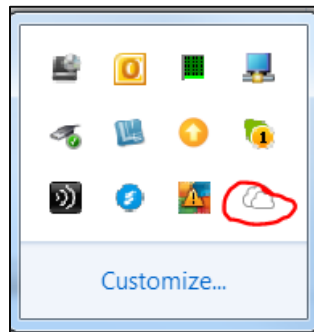
3. Run the exe file to install OneDrive:



4. When prompted, click “Sign In” to sign into your Microsoft account (you can sign up for a Microsoft account on the next page if you don’t already have one. If you do not already have a OneDrive account, please visit this link for specific [OneDrive pricing](#) information.



5. Upon successful installation and sign in, you will see the OneDrive cloud shaped icon in your System Tray:



6. The default local location of your OneDrive folder is...

C:\users\%your username%\OneDrive

This is the directory you will point your applications to for use of your supporting files:

